

Lighting Proposal Memo

Josh Kreutzberger, L/E
Consultant: Richard Mistrick
Dorrance H. Hamilton Building
Philadelphia, PA
September 26, 2006

The lighting proposal memo indicates which spaces I plan to redesign for senior thesis. Each space must be described with included drawings, space dimensions, and a list of activities and tasks that occur within each space. The four spaces to be redesigned in the Dorrance H. Hamilton Building are the auditorium, a classroom (a large work space), the lobby, and the plaza. System integration is initiated by lighting the plaza. The curved glass façade provides a transparent barrier between the plaza and the lobby. The lobby will provide a flow into the auditorium. The classroom on the fifth floor overlooks the plaza. The auditorium is approximately 64' wide by 76' long. The ceiling is approximately 15' high.

Auditorium (Special Purpose Space)

The 300-seat capacity auditorium resides on the first floor of the building. Upon entering the building through the curved façade that features large expanses of glass, one would find themselves in the lobby of the building. The auditorium entrance would then be straight ahead when in the lobby. The auditorium will be mainly used for seminars and lectures. The auditorium is approximately 64' wide by 76' long. The ceiling is approximately 15' high.

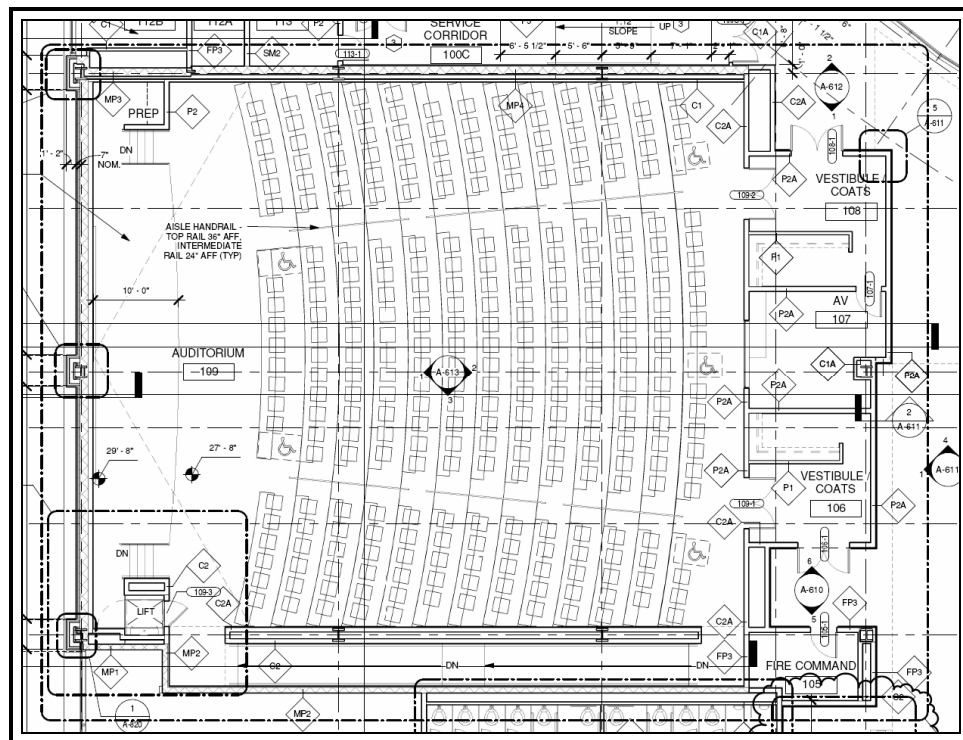


Figure 1: First Floor Plan View of Auditorium

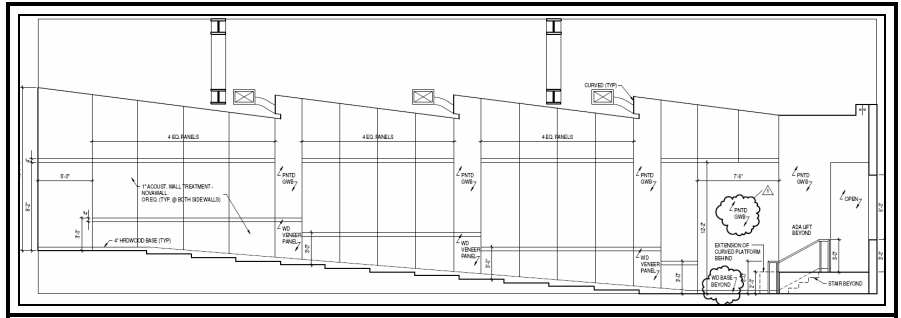


Figure 2: South Auditorium Section View

Classroom – 60 Capacity (Large Work Space)

The 60-person classroom is located on the fifth floor of the building. Some other spaces that accompany the classroom include other classrooms, lecture halls, two skills simulation lab, storage rooms, a lobby, and a library/meeting room. The one wall of the room has a potential for daylighting since it has the façade of the building incorporated into it. A daylighting study will be limited since I did not get a chance to take the daylighting class. The space is designated as a classroom, so it will have reading, writing, projection screen, and possibly a VDT. The space is approximately 55' wide by 30' long. The ceiling is approximately 10' high.

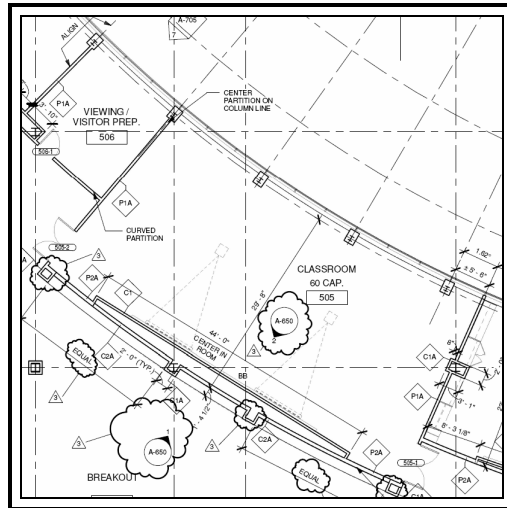


Figure 3: Fifth Floor Plan View of Classroom

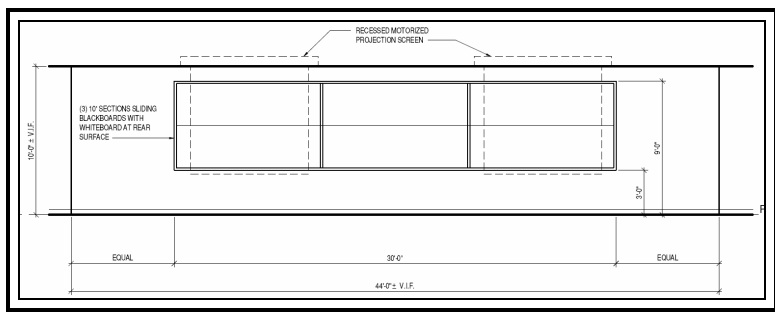


Figure 4: Classroom Section View

Lobby (Circulation Space)

The lobby is located on the first floor of the building. Upon entering the building through the curved façade that features large expanses of glass, one would find themselves in the lobby of the building. The auditorium entrance would then be straight ahead when in the lobby. The lobby will be mainly used for a circulation space although the space will have plasma screens in it. The lobby is approximately 75' wide by 120' long. The ceiling is open to above.

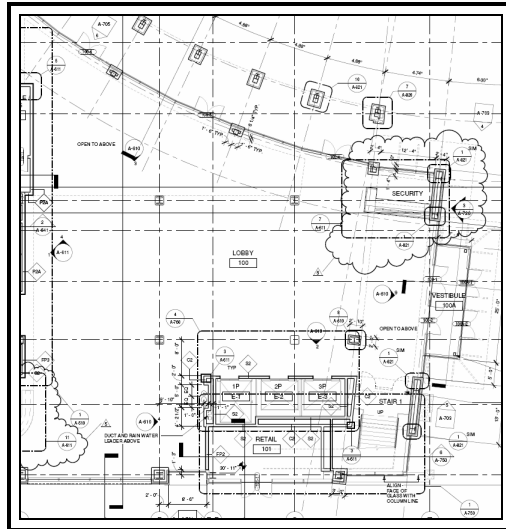


Figure 5: First Floor Plan View of Lobby

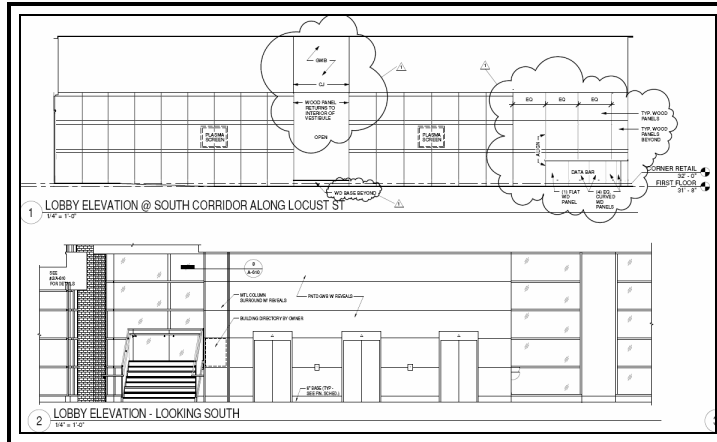


Figure 6: Section View of Lobby

Plaza (Outdoor Space)

The main entrance to the Dorrance H. Hamilton Building faces a grassy plaza where students and faculty can meet and interact informally. The facility's curved façade will feature large expanses of glass that will open on the plaza outside. The transparency of the building carries through the entire ground floor, allowing people on the street to look into the lobby, through the building and out to the plaza. The plaza includes walkways, a statue, seating areas, and an open grass area.

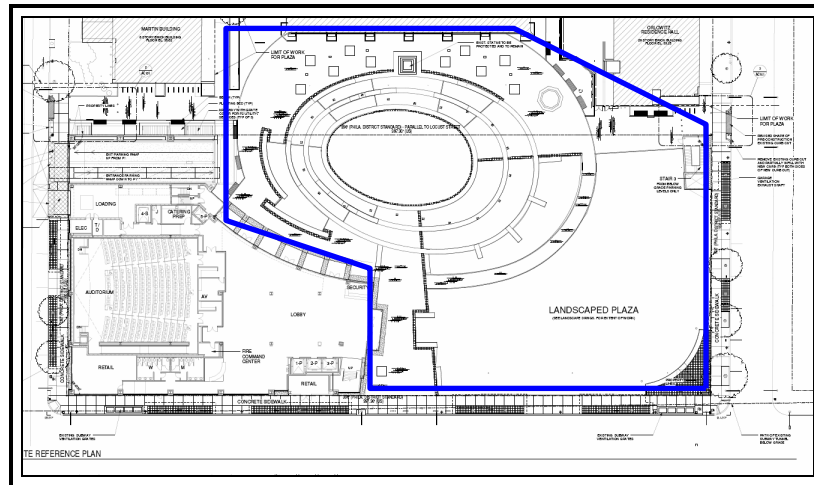


Figure 7: Site Plan for Plaza and Building